

EGT

SS Case Internal Brass Pressure Gauge
Bourdon type (Two Part Connection System)



CE

Special Features

- Stainless steel case & Brass measuring system
- Rugged construction
- Dry or liquid filled
- Standard followed in general EN 837-1

Application

- Engine compressors
- Diesel engines
- Equipments
- Pumps
- Hydraulic
- Hydro-cleaning machines
- Refrigerating plants and gaseous / liquid media that will not obstruct the pressure system.

Specifications

Standard Version : 50 mm, 63 mm & 80 mm

Accuracy	:	± 1.6% of F.S.
Ambient temperature	:	- 25°C to + 65°C
Process temperature	:	Max 180°C
Operating pressure	:	75 % of Scale Value
Over pressure limit	:	≤ 100 bar : 125% of Max. Scale Value
	:	> 100 to ≤ 600 bar : 115% of Max. Scale Value
	:	

Case & Bezel	:	AISI 304 SS (Crimped Bezel) / Optional Bayonet Bezel For NS 63 & 80mm (Option : SAB)
Socket	:	BRASS
Bourdon	:	BRASS Upto 35 Bar & Above SS 316L
Movement	:	Brass Plated
Joints	:	Silver Brazing

Protection	:	IP 68
Dial	:	Aluminium, black graduation on white background
Pointer	:	Black Coloured, Fixed
Window	:	Plexi Glass
Filling Plug	:	Neoprene
Gasket	:	Neoprene / Silicon rubber

Dry but fillable version (option DFG)

Fillable Dampening Liquid	:	Glycerine 99.7%
Ambient Temperature	:	(-) to 65°C
Process Temperature	:	Maximum 65°C
Other Features	:	Refer Specification of Standard Version

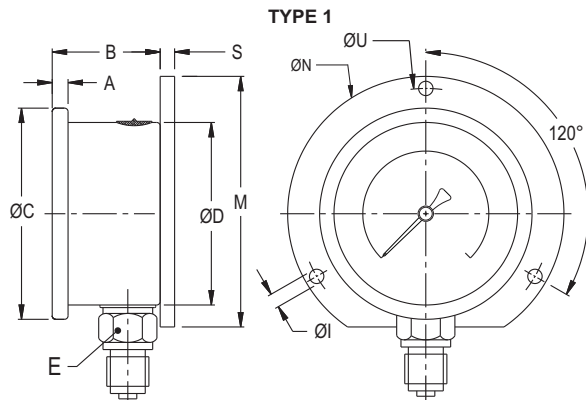
Glycerine filled version (option LGF)

Accuracy	:	±1.6% of F. S.
Ambient Temperature	:	Maximum
Process Temperature	:	Maximum 65°C
Window	:	Plexi Glass
Dampening Liquids	:	Glycerine 99.7%
Other Features	:	Refer Specification of Standard Version

Temperature effect:

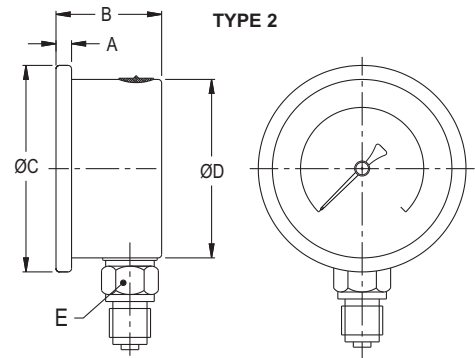
The variation of indication caused by effects of temperature is to be calculated by below formula; which is to be added in the specified accuracy while measurement :- Formula : $\pm 0.04 \times (t_2 - t_1) \% \text{ of F. S.}$ where t_1 = reference temperature (+20°C) and t_2 = ambient temperature in °C.

Dimensions - standard version



Crimped Type Bezel (Standard)

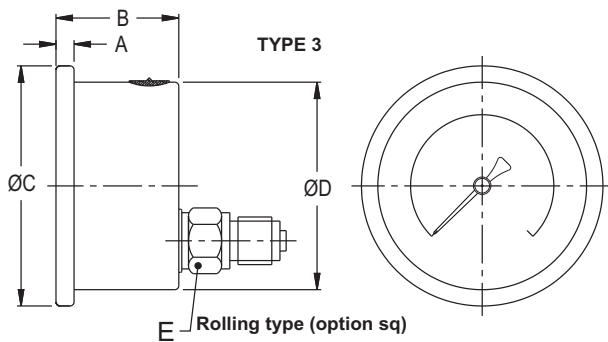
NS	A	B	ØC	ØD	E	S	ØN	ØI	ØU	M	Weight in gram (With Box)	Weight in gram (With Glycerin & Box)
63	6.5	30.5	69	62.5	A/F 14	7	86	3.6	75	80	190.0	250.0



Rolling Type (option Sq)

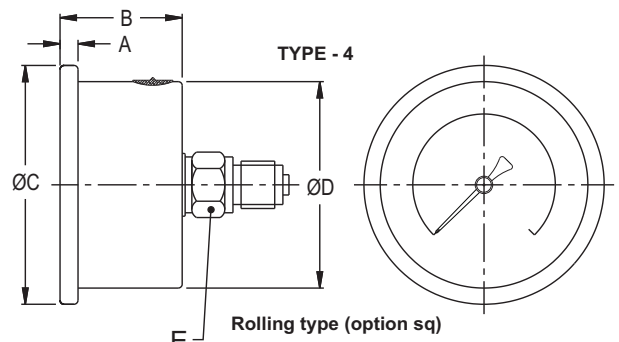
NS	A	B	ØC	ØD	E	Weight in gram (With Box)	Weight in gram (With Glycerin & Box)
40*	5	29	45.5	41	A/F 14	90.0	130.0
50	5	29	57.5	51.5	A/F 14	125.0	185.0
63	6.5	30.5	69	62.5	A/F 14	140.0	200.0

* Push Fit type (standard)



Rolling type (option sq)

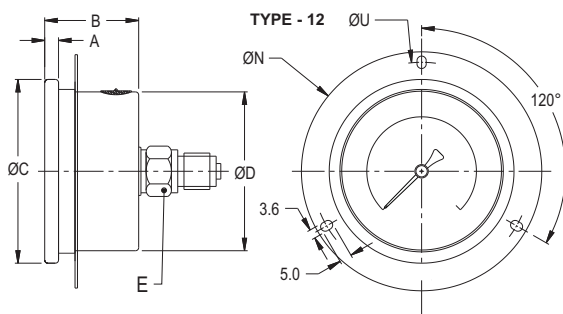
NS	A	B	ØC	ØD	E	Weight in gram (With Box)	Weight in gram (With Glycerin & Box)
63	6.5	30.5	69	62.5	A/F 14	160.0	220.0



Rolling type (option sq)

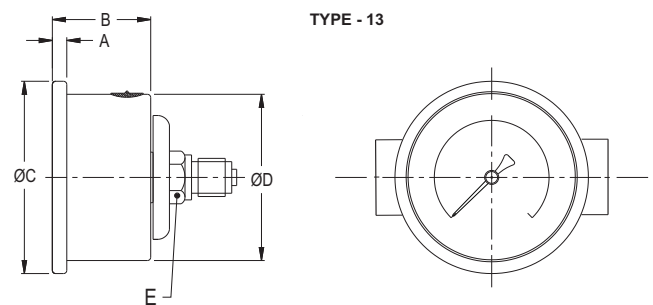
NS	A	B	ØC	ØD	E	Weight in gram (With Box)	Weight in gram (With Glycerin & Box)
40*	5	29	45.5	41	A/F 14	100.0	140.0
50	4.5	29	57.5	51.5	A/F 14	117.0	167.0
63	6.5	30.5	69	62.5	A/F 14	170.0	230.0

* Rolling type (standard)



Rolling type (option sq)

NS	A	B	ØC	ØD	E	ØN	ØU	Weight in gram (With Box)	Weight in gram (With Glycerin & Box)
63	6.5	30.5	69	62.5	A/F 14	86	75	220.0	280.0

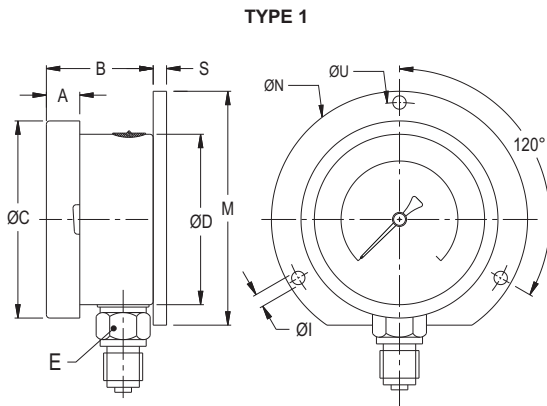


Rolling type (standard)

NS	A	B	ØC	ØD	E	Weight in gram (With Box)	Weight in gram (With Glycerin & Box)
50	5	29	57	51.5	A/F 14	180.0	240.0
63	6.5	30.5	69	62.5	A/F 14	210.0	270.0

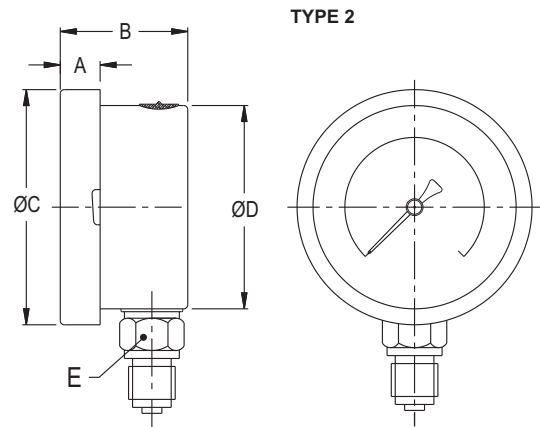
Notes : • Drawings are not to scale. • All Dimensions are in mm . • NS = Nominal size
• Weights mentioned are approximate and for standard product. Weight can be different after selection of options.

Dimensions - standard version



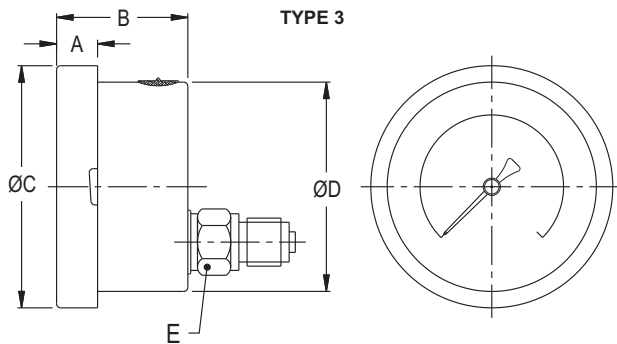
Bayonet type (Option : SAB)

NS	A	B	ØC	ØD	E	S	ØN	ØI	ØU	M	Weight in gram (With Box)	Weight in gram (With Glycerin & Box)
63	12	32	70	63	A/F 14	1	86	3.5	75	80	215.0	265.0
80	12	35	90	80	A/F 14	1	110	5	94	95	300.0	380.0



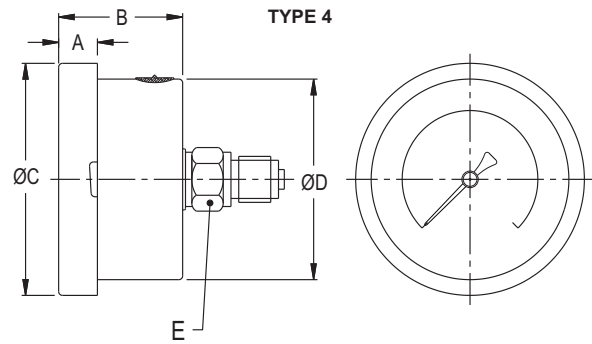
Bayonet type (Option : SAB)

NS	A	B	ØC	ØD	E	Weight in gram (With Box)	Weight in gram (With Glycerin & Box)
63	12	32	70	63	A/F 14	180.0	240.0
80	12	35	90	80	A/F 14	250.0	330.0



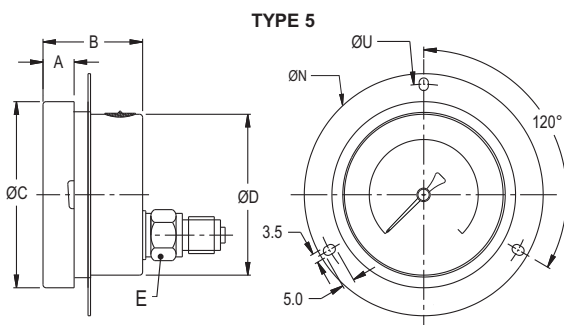
Bayonet type (Option : SAB)

NS	A	B	ØC	ØD	E	Weight in gram (With Box)	Weight in gram (With Glycerin & Box)
63	12	32	70	63	A/F 14	190.0	250.0



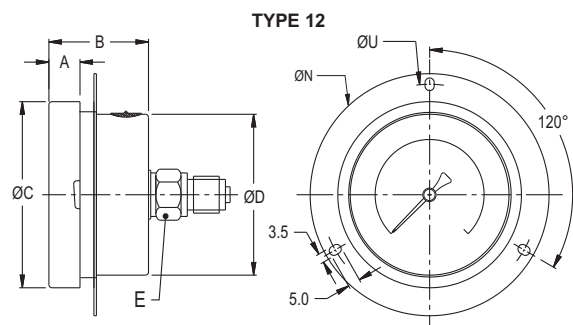
Bayonet type (Option : SAB)

NS	A	B	ØC	ØD	E	Weight in gram (With Box)	Weight in gram (With Glycerin & Box)
63	12	32	70	63	A/F 14	188.0	250.0
80	12	35	90	80	A/F 14	240.0	320.0



Bayonet type (Option : SAB)

NS	A	B	ØC	ØD	E	ØN	ØU	Weight in gram (With Box)	Weight in gram (With Glycerin & Box)
63	12	32	70	63	A/F 14	86	75	213.0	275.0



Bayonet type (Option : SAB)

NS	A	B	ØC	ØD	E	ØN	ØU	Weight in gram (With Box)	Weight in gram (With Glycerin & Box)
63	12	32	70	63	A/F 14	86	75	213.0	275.0

Range Table

Note : We offer Pressure ranges, Vacuum ranges and Compound ranges in Scales like kPa, MPa, bar, psi, kg/cm² & Dual Scale like kPa with psi, kPa with bar, bar with psi or scales as per the requirement can be provided on request. Following are the example tables for kg/cm² & psi scales.

Range with nominal sizes

Nominal size

Range (psi with kg/cm ²)		40 mm	50 mm	63 mm	80 mm
psi	kg/cm ²				
-30 inHg / 0	-760 mmHg / 0	✓	✓	✓	✓
0/15 psi	0/1 kg/cm ²	✓	✓	✓	✓
0/30 psi	0/2 kg/cm ²	✓	✓	✓	✓
0/60 psi	0/4 kg/cm ²	✓	✓	✓	✓
0/100 psi	0/7 kg/cm ²	✓	✓	✓	✓
0/150 psi	0/10 kg/cm ²	✓	✓	✓	✓
0/220 psi	0/16 kg/cm ²	×	✓	✓	✓
0/300 psi	0/20 kg/cm ²	×	✓	✓	✓
0/400 psi	0/28 kg/cm ²	×	✓	✓	✓
0/500 psi	0/35 kg/cm ²	×	✓	✓	✓
0/600 psi	0/42 kg/cm ²	×	✓	✓	✓
0/1000 psi	0/70 kg/cm ²	×	✓	✓	✓
0/1500 psi	0/100 kg/cm ²	×	✓	✓	✓
0/2200 psi	0/160 kg/cm ²	×	✓	✓	✓
0/3000 psi	0/200 kg/cm ²	×	✓	✓	✓
0/4000 psi	0/280 kg/cm ²	×	✓	✓	✓
0/5000 psi	0/350 kg/cm ²	×	✓	✓	✓
0/6000 psi	0/400 kg/cm ²	×	✓	✓	✓
0/10000 psi	0/700 kg/cm ²	×	×	✓	✓
0/15000 psi	0/1000 kg/cm ²	×	×	✓	✓
- 30inHg /30	- 1/2 kg/cm ²	×	×	✓	✓
- 30inHg /60	- 1/4 kg/cm ²	×	×	✓	✓
- 30inHg /100	- 1/7 kg/cm ²	×	×	✓	✓
- 30inHg /150	- 1/10 kg/cm ²	×	×	✓	✓
- 30inHg /200	- 1/14 kg/cm ²	×	×	✓	✓
- 30inHg /300	- 1/21 kg/cm ²	×	×	✓	✓

Ammonia with temperature scale

- 30° Hg / 150 psi		×	×	✓	✓
- 30° Hg / 300 psi		×	×	✓	✓
0/300 psi		×	×	✓	✓
-112.5 kg/cm ²		×	×	✓	✓
-1/16 kg/cm ²		×	×	✓	✓
-1/25 kg/cm ²		×	×	✓	✓

Accessories (refer datasheet for complete specifications)

EC	Gauge cock	EG	Snubber
ED	Overload protector (gauge saver)**	EH	Siphon
*	Needle valve	EB	Cooling tower

* Refer catalogue for Valves & Manifolds

** For Pressure Ranges.

How To Order					Example
Basic Model					WP2
Code					
Nominal Size					
		20	25	30	
		50 mm	63 mm	80 mm	XX
Type of Mounting					
1	Wall/ surface/ projection mounting With bottom entry	×	✓	✓	
2	Direct bottom entry	✓	✓	✓	X
3	Direct lower back entry	×	✓	×	OR
4	Direct center back entry	✓	✓	✓	XX
5	Lower back entry with front flange	×	✓	×	
12	Center back entry with front flange	×	✓	×	
13	Center back entry with mounting bracket*	✓	✓	×	
Note : *Applicable for Rolling type design only.					
Gauge Connection					
	Nominal Size >	C	D	E	
1BM	1/8" BSP (M)	✓	✓	×	
1NM	1/8" NPT (M)	✓	✓	×	
1TM	1/8" BSPT (M)	✓	✓	×	
2BM	¼" BSP (M)	✓	✓	×	
2NM	¼" NPT (M)	✓	✓	×	XXX
2TM	¼" BSPT (M)	✓	✓	×	
3BM	3/8" BSP (M)	×	×	✓	
3NM	3/8" NPT (M)	×	×	✓	
3TM	3/8" BSPT (M)	×	×	✓	
4BM	½" BSP (M)	×	×	×	
4NM	½" NPT (M)	×	×	×	
4TM	½" BSPT (M)	×	×	×	
* These connections will be provided on request. Consult factory for minimum order quantity, price & delivery.					
Range					0/10 kg/cm ²
Refer range table					
Optional Extras					
CDD	Custom designed dial				
OXS	Oxygen service (for dry version)	HLT	Helium leak test		
DFG	Dry but Field Fallible liquid glycerine	TDG	Toughened glass (for bayonet type design) * #		
DFS	Dry but Field Fallible liquid silicon oil ***	MDJ	Movement with dampening jelly * #		
LFG	Dampening liquid glycerine filled ##	NH3	Ammonia range (with temperature scale) * #		XXX
LFS	Dampening liquid silicon oil filled ***	SAB	Snap Action Bayonet Type Case & Bezel #		
MTC	Material test certificates ****				
TRC	Calibration certificate traceable to National / International standards				

Applicable for NS 63 mm & 80 mm.

*** Gasket & Filling Plug of Viton.

Applicable for NS 50mm, 63mm & 80mm.

**** Material test certificates will be provided for wetted parts only with chemical composition testing.
For others, please consult factory.

Ordering Example: EGT - XX - X OR XX - XXX - 0/10 kg/cm² - XXX

For other optional items, please contact factory for delivery and minimum quantity of order.

Note : Specifications and dimensions given in this product catalogue represents the state of engineering at the time of printing.
Modifications may take place and materials specified may be replaced by others without prior notice.